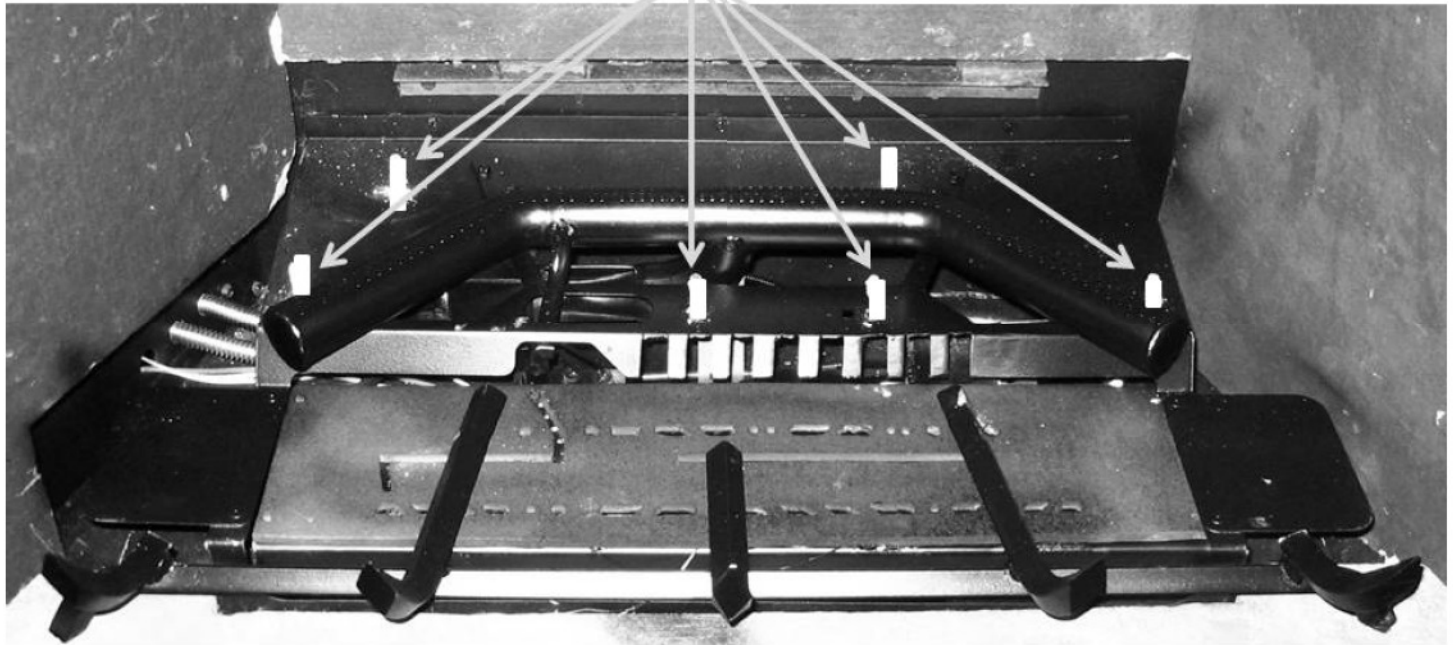
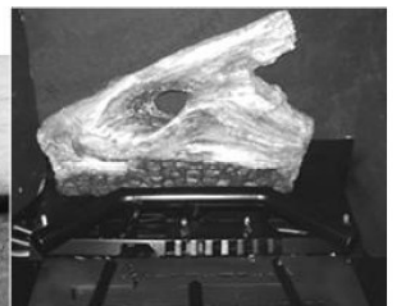


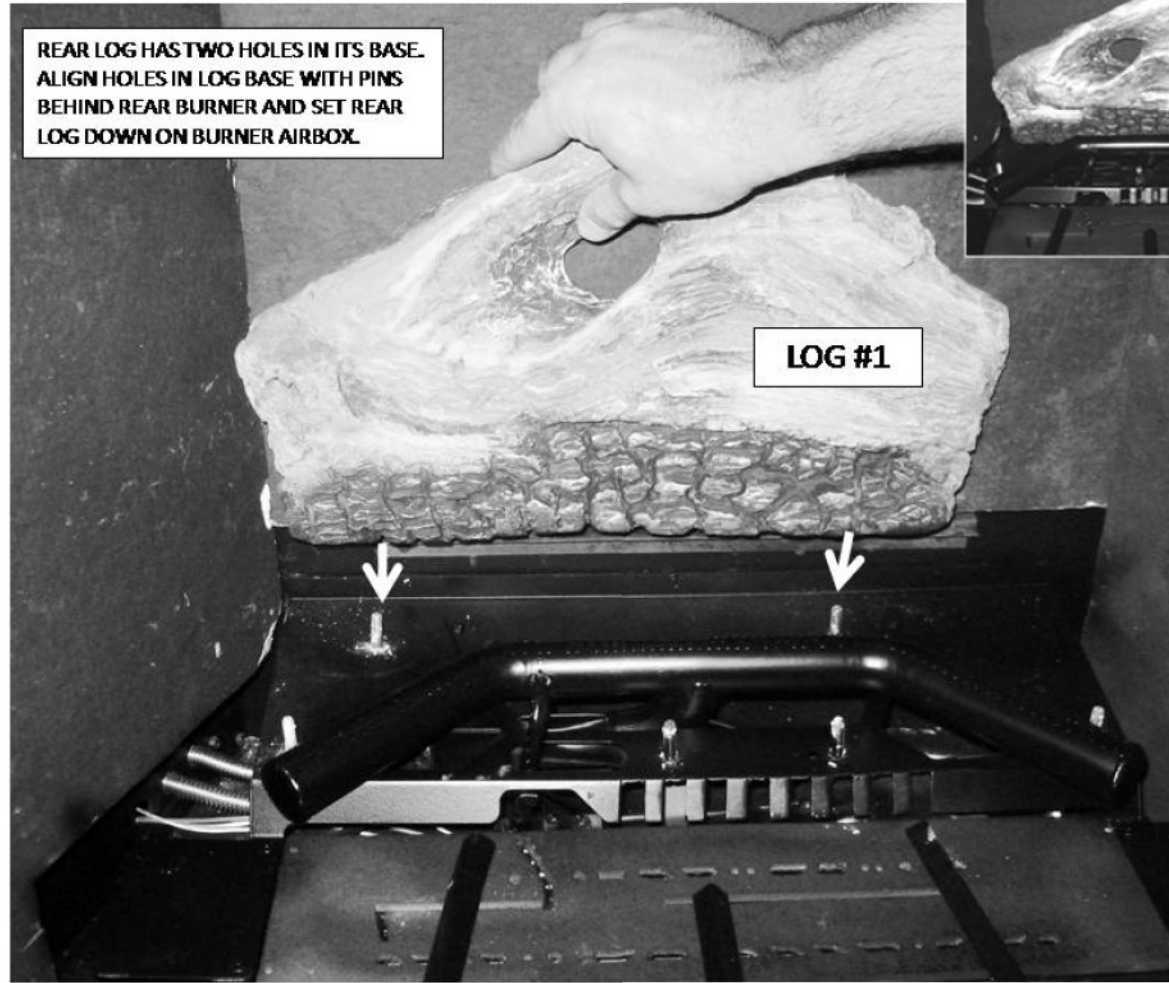
LOG PIECES LOCATER PINS

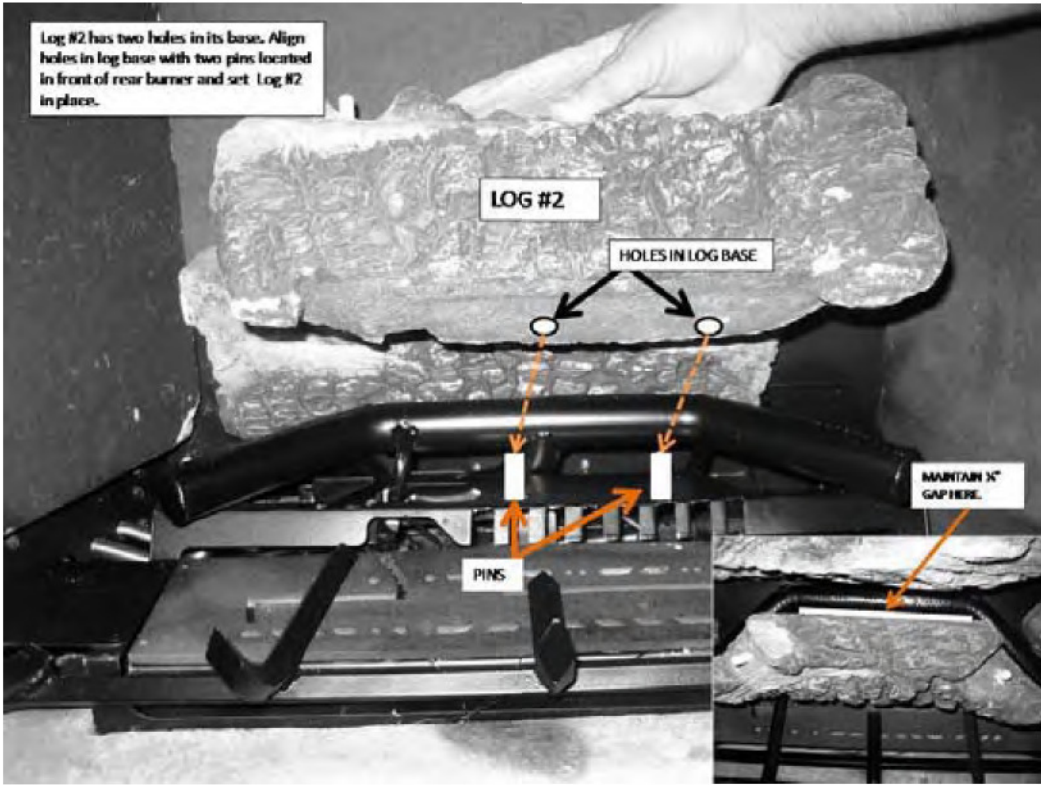


REAR LOG HAS TWO HOLES IN ITS BASE. ALIGN HOLES IN LOG BASE WITH PINS BEHIND REAR BURNER AND SET REAR LOG DOWN ON BURNER AIRBOX.

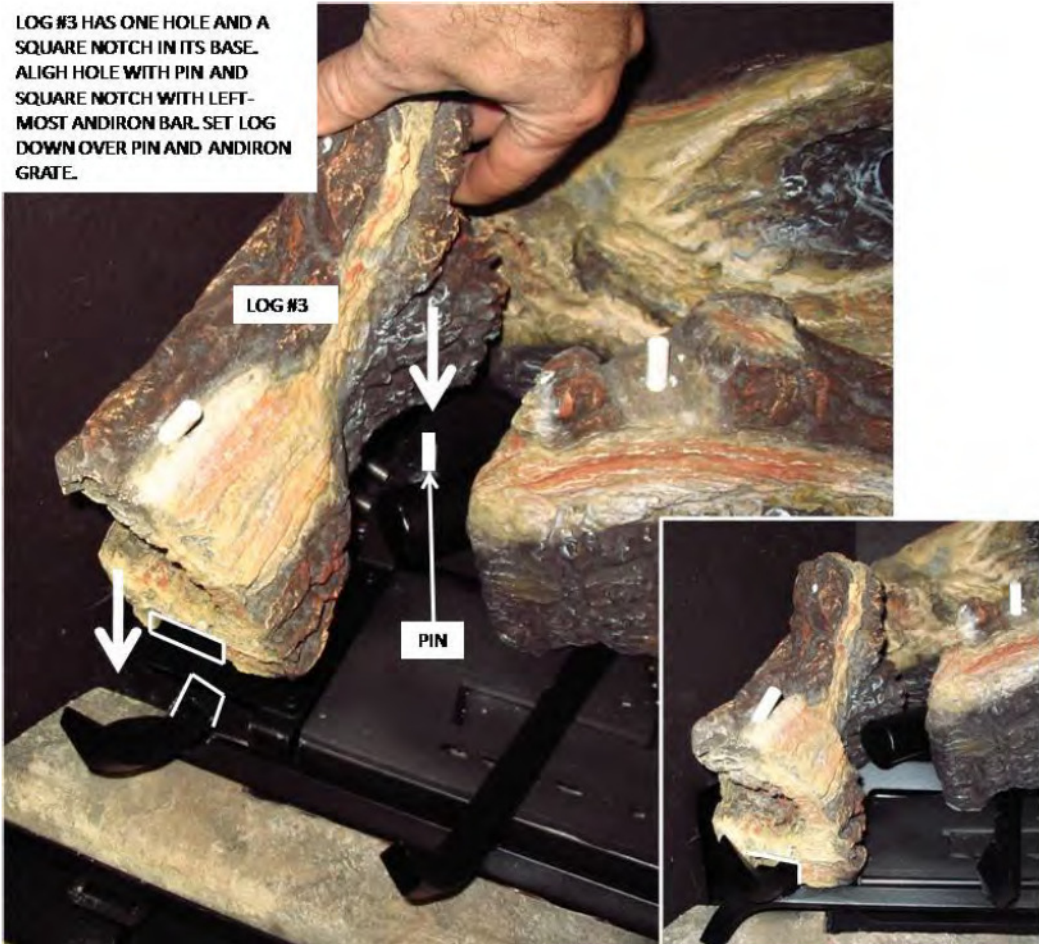


LOG #1



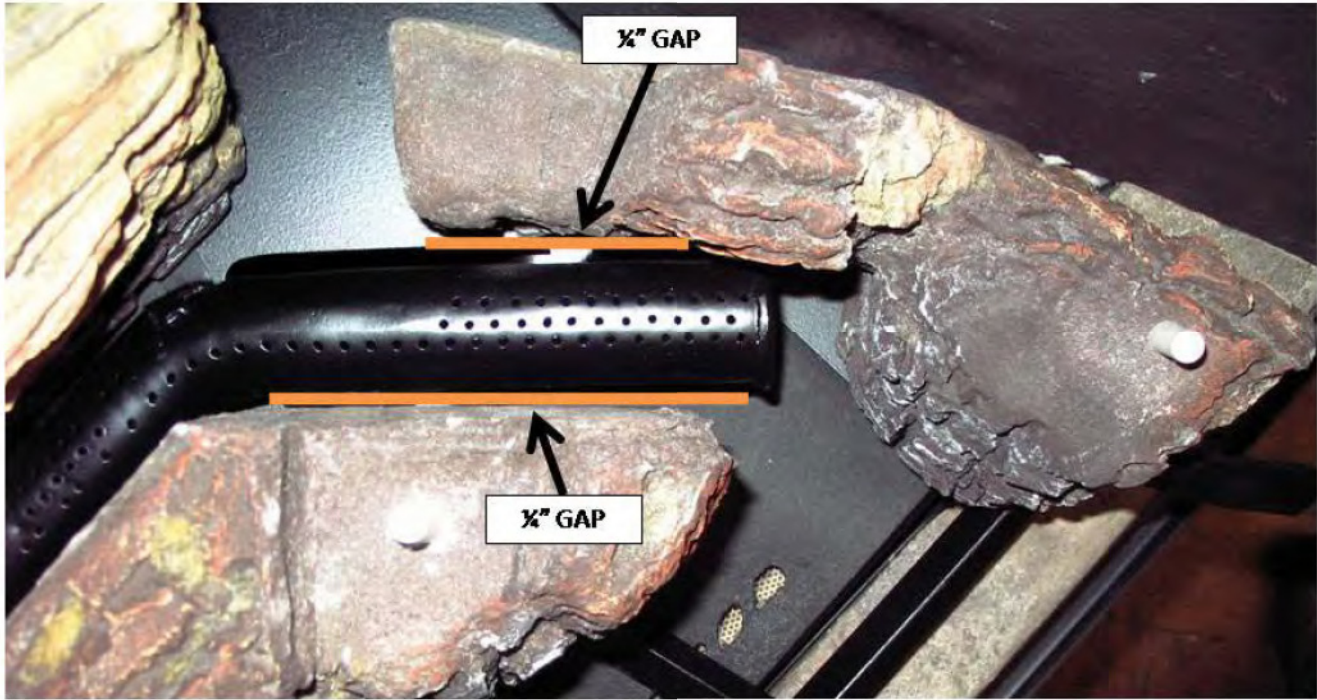


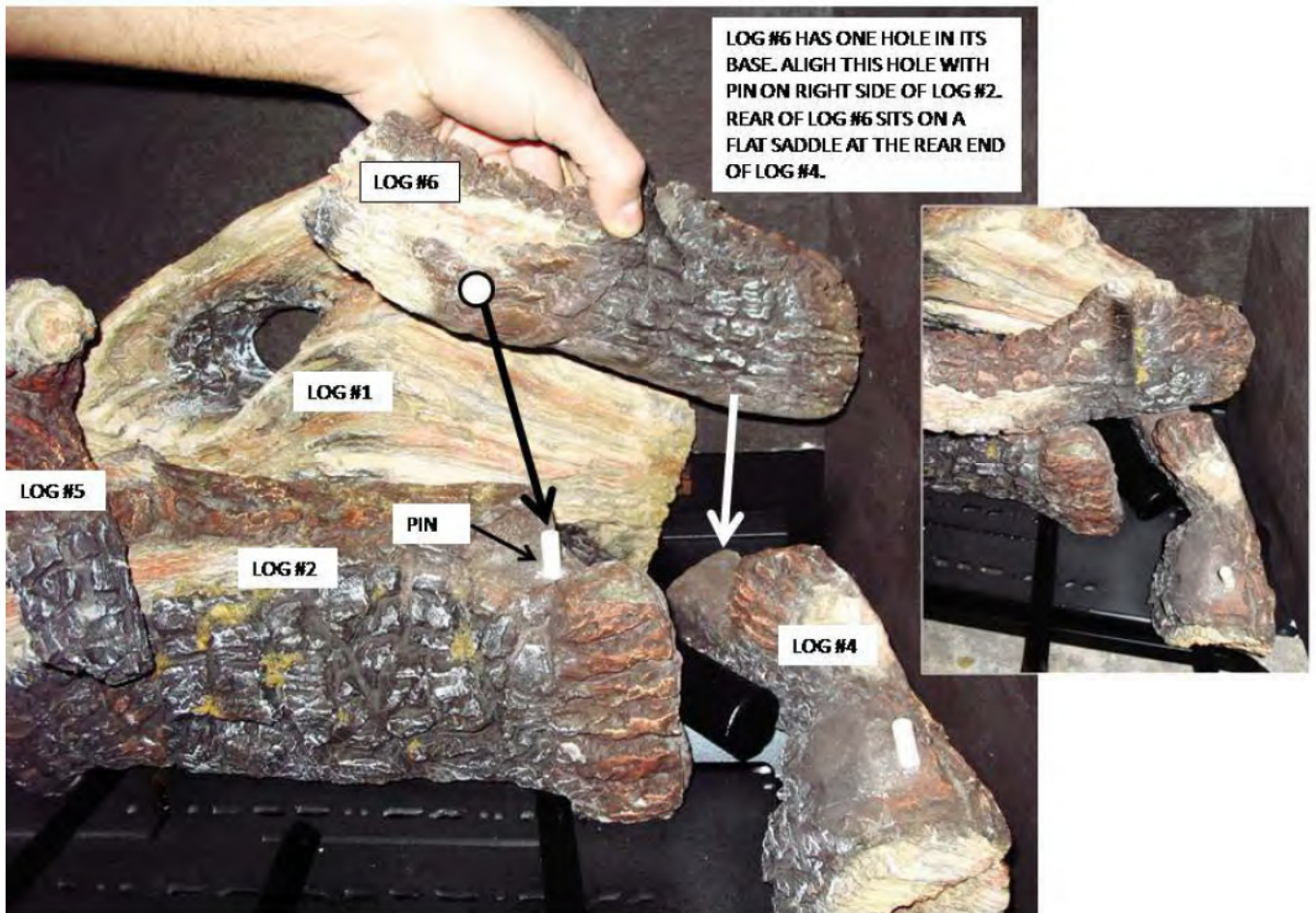
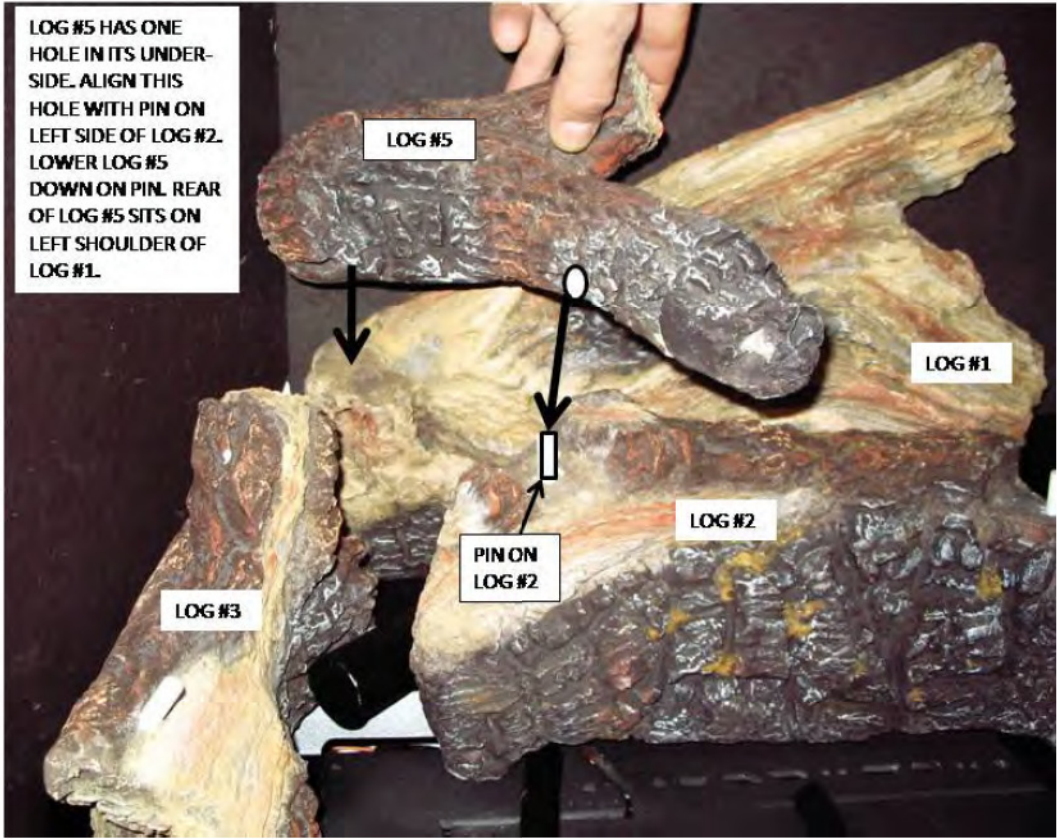
LOG #3 HAS ONE HOLE AND A SQUARE NOTCH IN ITS BASE. ALIGN HOLE WITH PIN AND SQUARE NOTCH WITH LEFT-MOST ANDIRON BAR. SET LOG DOWN OVER PIN AND ANDIRON GRATE.





LOG #4 HAS ONE HOLE IN ITS BASE AND A SQUARE NOTCH IN ITS FRONT FACE. ALIGN HOLE WITH PIN AND SQUARE NOTCH WITH RIGHT-MOST ANDIRON BAR. LOWER LOG #4 IN PLACE.



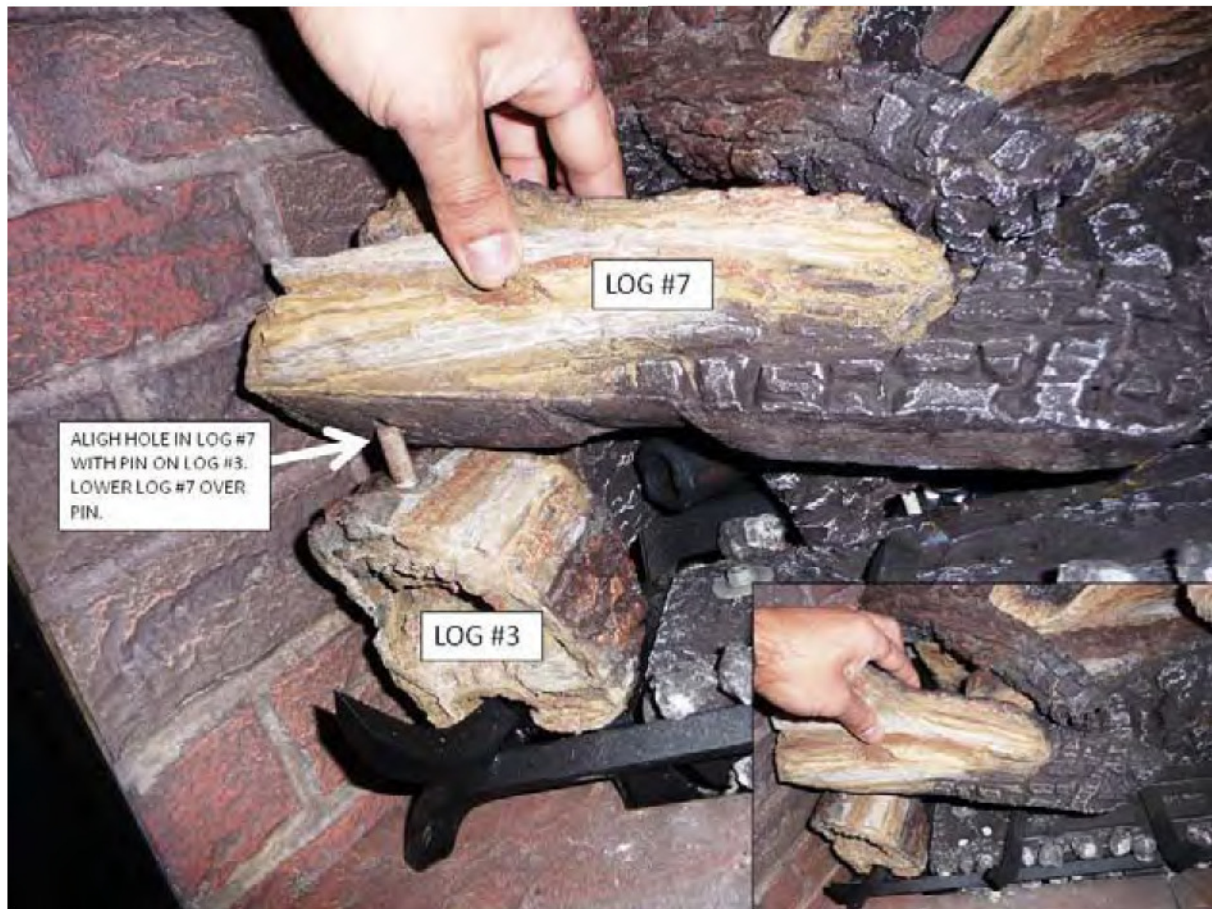


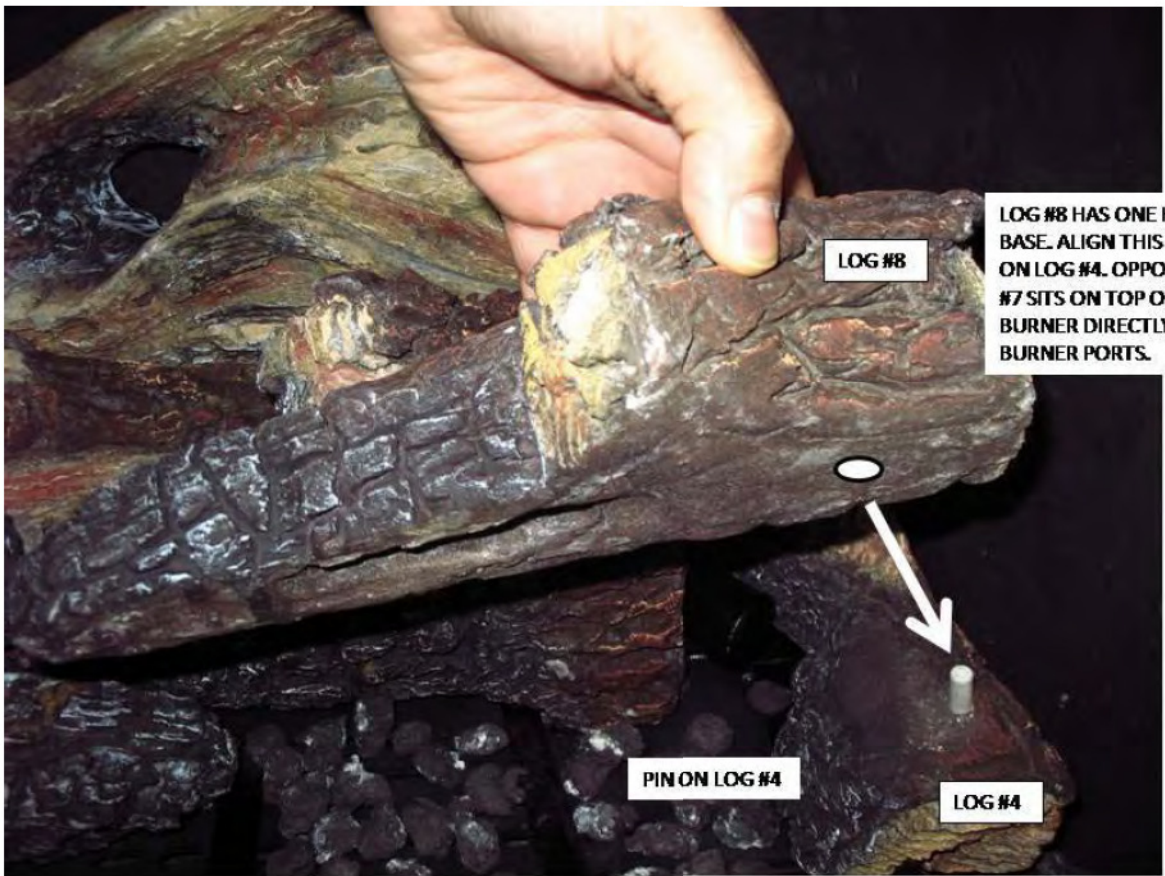


PLACE SMALL COALS LOOSELY ALONG GRATE BAR ONLY.



USING A TOOTHBRUSH, BRUSH INSWOOL LIBERALLY OVER BURNER EMBER BED AND CENTER LOG. AVOID DEPOSITING EXCESSIVE INSWOOL INSIDE BURNER PORTS.

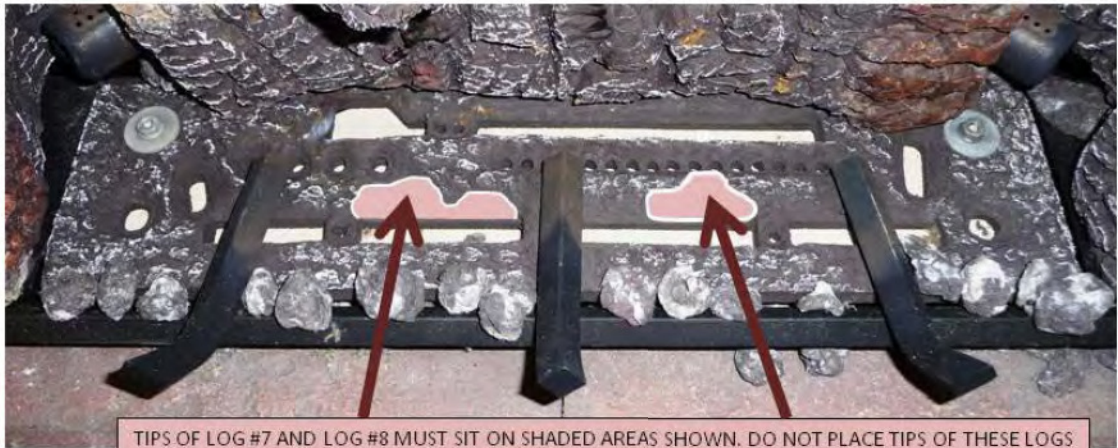




LOG #8 HAS ONE HOLE IN ITS BASE. ALIGN THIS HOLE WITH PIN ON LOG #4. OPPOSITE TIP OF LOG #7 SITS ON TOP OF FRONT BURNER DIRECTLY BEHIND FRONT BURNER PORTS.

PIN ON LOG #4

LOG #4



TIPS OF LOG #7 AND LOG #8 MUST SIT ON SHADED AREAS SHOWN. DO NOT PLACE TIPS OF THESE LOGS ON TOP OF BURNER EMBER BED'S GAS PORTS.



USING A TOOTHBRUSH,
BRUSH INSWOOL LOOSELY
OVER FRONT BURNER AND
OVER CHARRED AREAS OF
FRONT LOGS.

PLACE SMALL COALS ON TOP OF FLOOR
BRICK PANELS AND CLOSE TO GRATE
BOTTOM TO SIMULATE A COAL BED.



COMPLETED LOG SET

